

For Sale on Market

\$115,000

Call 7138840322 Today!

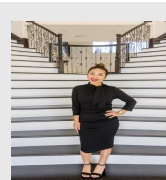
308 ALAMEDA RD, AZLE, TX 76020

2 BEDS, 2 FULL BATH(S)

Investment Property or starter home. Discover the charming potential of this property in Azle, Texas, a delightful single-family home nestled in the tranquil Castle Hills Estate neighborhood, offering a rare opportunity for investors or first-time buyers seeking value and location. This cozy residence, built in 1963, features two comfortable bedrooms and two full bathrooms across approximately 1,080 square feet of living space—perfectly proportioned for easy living or renovation. Situated on an expansive 0.35-acre lot, this property provides ample outdoor space for landscaping, gardening, or expansion. Central heating and cooling offer year-round comfort, and the home's classic mid-century charm pairs nicely with the generous lot and mature surroundings. Located in a quiet, established subdivision, the property benefits from nearby schools and amenities. It lies within the reputable Azle Independent School District, and schools such as Eagle Heights Elementary, Azle Junior High South, and Azle High School offer solid educational options. Azle itself is a welcoming community just 17 miles northwest of Fort Worth, offering a small-town feel with convenient access to urban amenities. Residents here enjoy the best of both worlds: peaceful suburban living with quick proximity to major highways, shopping, dining, and Eagle Mountain Lake recreation or commute options to Fort Worth. The home's off-market status affords exceptional discretion and an opportunity to secure a desirable property before it returns to the broader market. In summary, this

GENERAL DESCRIPTION

- Subdivision:** Castle Hills Estates
- Property Type:** Residential - Single Family
- Bedrooms:** 2
- Baths:** 2 Full
- Stories:** 1
- Style:** Traditional
- Year Built:** 1963
- Building Sqft:** 1,080 /
- Lotsize:** 15,202
- MLS# / Area:** NTREIS-21039072



Presented By
Alyssa Lienau

Century 21 Lucky Money

7138840322

308 Alameda Rd, Azle, TX 76020

Visit <https://www.har.com/NTREIS-21039072> for more information

Listing Broker
Honey Homes + Land