



For Sale on Market

\$239,000

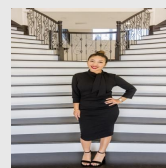
Call 7138840322 Today!

LOT 168 E STARVIEW CV, BLANCO, TX 78606

Big skies. Rolling hills. Ranging Exotics. Low taxes. Set within the rolling hills of Blanco, Texas, this 5.3-acre homesite offers the best of Hill Country living: breathtaking panoramic views, mature oaks, and complete privacy at the end of a quiet cul-de-sac in a highly desirable gated community. From the moment you drive through the gates, you're surrounded by unspoiled countryside, scenic ridgelines- all just an hour from both Austin and SA. The community continues to grow, with over 40 new custom home builds and multiple recent \$1M+ property sales, adding strong value and confidence for long-term investment. This gently sloped lot is ideal for a custom home that captures both sunrises and sunsets, while offering multiple build spots to maximize views. You'll enjoy low taxes thanks to a wildlife ag exemption, and the property lies in a certified Dark Sky community, ensuring stargazing without city light pollution. Community amenities include access to the spring-fed Blasingame Creek, a pond for fishing and kayaking, a swimming hole, sports court, communal event room, and a Homestead House available for overnight guests. With underground electric, high-speed internet, and paved private roads—gives you the comforts of modern living while staying immersed in nature. Free-ranging exotic wildlife like blackbuck and oryx, along with white-tail deer, wild turkey, and a small herd of donkeys roaming the land. Just 5 minutes away, Blanco State Park offers swimming, tubing, and fishing along the Blanco River under shady cypress trees. The historic town of

GENERAL DESCRIPTION

- Subdivision:** Majestic Hills Ranch
- Property Type:** Land / Unimproved Land
- Lotsize:** 230,868
- Maintenance Fee:** \$600 / Annually
- MLS# / Area:** NTREIS-20965704



Presented By
Alyssa Lienau

Century 21 Lucky Money

7138840322

Listing Broker
Keller Williams Realty

Lot 168 E Starview Cv, Blanco, TX 78606

Visit <https://www.har.com/NTREIS-20965704> for more information