



**CLOSED** on Market

# \$375,000

Call 972-333-0301 Today!

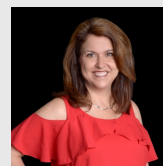
## 809 MATHEW DR, ANNA, TX 75409

3 BEDS, 2 FULL BATH(S)

Fall in love with this impeccably maintained, lovingly cared-for home in the heart of Anna Town Square! This beautiful 3-bedroom, 2-bath gem sits on an oversized corner lot with serene pond views and features a 3-car garage. Inside, enjoy luxurious vinyl plank floors, custom plantation shutters and a spacious kitchen with upgraded appliances, granite countertops, a large island and walk-in pantry....and fridge stays! The primary suite is a true retreat with dual vanities, an oversized shower and two generous walk-in closets. Every inch of this home has been thoughtfully upgraded and maintained with pride. Enjoy peaceful evenings on the covered patio or take advantage of the community pool, playgrounds and top-rated schools just a short stroll away. With the new HEB, Home Depot, dining and highways minutes away, this is the perfect blend of charm, comfort and convenience. Don't miss your chance to make this exceptional home yours!

### GENERAL DESCRIPTION

- Subdivision:** Anna Crossing Ph 5
- Property Type:** Residential - Single Family
- Bedrooms:** 3
- Baths:** 2 Full
- Stories:** 1
- Garage:** 3 / Attached,Tandem
- Year Built:** 2020
- Building Sqft:** 2,086 /
- Lotsize:** 10,498
- Maintenance Fee:** \$600 / Annually
- MLS# / Area:** NTREIS-20945766



Get in touch  
**Lisa Biddle**

972-333-0301



**EXP REALTY**

888-519-7431

809 Mathew Dr, Anna, TX 75409

Visit <https://www.har.com/NTREIS-20945766> for more information