



For Sale on Market

# \$495,000

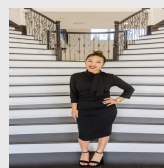
Call 7138840322 Today!

## GENERAL DESCRIPTION

- Subdivision:** Western Addn (KMBL)
- Property Type:** Single Family
- Stories:** 1
- Garage:** 25
- Building Sqft:** 1,366 /
- Lotsize:** 15,682
- MLS# / Area:** KMLSTX-121348

## 1619 MAIN ST, JUNCTION, TX 78028

The Milky Way is an iconic, turn-key commercial opportunity steeped in history and local charm. Originally built circa 1953 as a classic drive-up diner with car hop service, this beloved establishment has been a staple of the community for generations. Located on busy Main Street in the heart of town, it enjoys excellent visibility, strong foot traffic, and a loyal customer base. The offering includes the real estate, business, and equipment, making this a rare opportunity to own a highly profitable and well-established operation. Step inside and be transported back in time—this clean, cozy restaurant exudes vintage character while remaining fully functional and efficiently run. The Milky Way is known for its outstanding food, nostalgic atmosphere, and exceptional customer loyalty. For decades, nearly every local high school student has had some connection to The Milky Way, contributing to its strong community roots and impressive employee retention. With proven performance, timeless appeal, and a "swanky retro" vibe that continues to draw crowds, this is a dream opportunity for an owner-operator or investor seeking a turnkey business with history, heart, and steady income.



Presented By  
**Alyssa Lienau**

Century 21 Lucky Money

7138840322

Listing Broker  
Fore Premier Properties

1619 Main St, Junction, TX 78028

Visit <https://www.har.com/KMLSTX-121348> for more information