



For Sale on Market

**\$1,599,000**

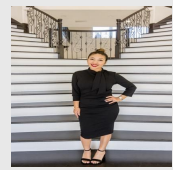
Call 7138840322 Today!

## LOTT ROAD, DONNA, TX 78537

Prime 25-acre tract located on the corner of Lott Rd and Midway Rd in Donna, TX, offering exceptional accessibility and visibility in a rapidly growing area. This expansive property presents a rare opportunity for those looking to capitalize on the region's continued development and demand for land. With its strategic corner positioning and ample space, the property is well-suited for a variety of future uses. Whether you're looking to secure land for long-term investment or explore development opportunities, this tract delivers outstanding potential. Utilities: Weslaco Sewer, North Alamo Water Supply, & Magic Valley Electric Cooperative

### GENERAL DESCRIPTION

- Subdivision:** La Donna
- Property Type:** Residential Lots
- Lotsize:** 1,117,750
- MLS# / Area:** GMARTX-501111



Presented By  
**Alyssa Lienau**

Century 21 Lucky Money 7138840322

Listing Broker  
URSA Real Estate

Lott Road, Donna, TX 78537

Visit <https://www.har.com/GMARTX-501111> for more information