

For Sale on Market

\$1,207,800

Call 7138840322 Today!

GENERAL DESCRIPTION

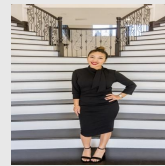
Property Type: Residential Lots

Lotsize: 584,575

MLS# / Area: EPBORTX-81802

658 RIVERSIDE DR, EAGLE PASS, TX 78852

Prime land opportunity in a high-growth area of Eagle Pass! This 13.42-acre tract on Riverside Drive sits just .60 miles from the Lucky Eagle Casino, making it an exceptional site for multi-family, duplex, hotel, or commercial development. Utilities (water and sewer) are available nearby, and access from the main road allows excellent visibility and traffic flow. With its proximity to the casino, new residential growth, and the Rio Grande corridor, this property is ideal for investors looking to capitalize on the city's expanding tourism and housing demand. Don't miss this chance to secure one of the few large parcels in this corridor with such development potential and strategic location!



Presented By
Alyssa Lienau

Century 21 Lucky Money

7138840322

Listing Broker
Keller Williams Laredo

658 Riverside Dr, Eagle Pass, TX 78852

Visit <https://www.har.com/EPBORTX-81802> for more information