



For Sale on Market

\$169,000

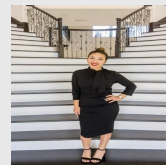
Call 7138840322 Today!

253 -- APACHE TRACE, HARPER, TX 78631

Apache Trace is a 500 acre ranch community with lots ranging from 5 to 9 acres, conveniently located off of FM 479, 6 miles from Harper & 20 miles from Kerrville. Gently rolling terrain with large hardwoods, and lush native grass, is easy to get around on and offers bottom land to hilltop views. The perfect place to get back to the country, and away from the noise of the city. The land is very livestock and horse friendly. Whether you're older and ready to slow down, or you want a place to raise your kids where they have room to roam, this is it. NO HOA & NO ARCHITECTURAL CONTROL COMMITTEE.

GENERAL DESCRIPTION

Subdivision: Apache Trace
Property Type: Residential Lots
Style: Other
Lotsize: 231,739
MLS# / Area: CHCBORTX-96574



Presented By
Alyssa Lienau

Century 21 Lucky Money

7138840322

Listing Broker
Reno Realty Group

253 -- Apache Trace, Harper, TX 78631

Visit <https://www.har.com/CHCBORTX-96574> for more information