



For Sale on Market

\$294,000

Call 7138840322 Today!

3 CR 1144 UNIT: 3, SINTON, TX 78387

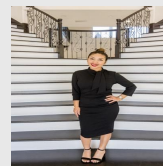
Tract 3 - 21 acre lot - undeveloped, unrestricted land located in a highly sought after area experiencing an economic explosion of diverse industries. Having easy access from City Rd 1144 or City Rd 1196, it has premier fencing, is currently under wildlife exemption with San Patricio County Appraisal District. Mature mesquite & oak trees are abundant. Buyers can easily access Rincon water service. Electric is serviced by San Patricio Electric Co-op. Located 1 hr from Victoria, 34 min. to Corpus, 3 hrs to Houston, 3 hrs to Austin, 2 hrs to San Antonio & 35 minutes to Portland with companies like Cheniere Energy, ExxonMobil's Growth Ventures Plastics Manufacturing plant project in Gregory & Steel Dynamics' \$1.9 Billion steel mill near Sinton.

GENERAL DESCRIPTION

Property Type: Residential Lots

Lotsize: 914,760

MLS# / Area: CCARTX-418327



Presented By
Alyssa Lienau

Century 21 Lucky Money

7138840322

Listing Broker
Armstrong Real Estate

3 CR 1144 unit: 3, Sinton, TX 78387

Visit <https://www.har.com/CCARTX-418327> for more information