

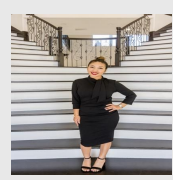
For Sale on Market

\$3,544,875

Call 7138840322 Today!

CR 2144 & 3567 (LANG ROAD) LOT: 0, PORTLAND, TX 78374

If you're looking to get your hands on prime Portland property, now's your chance! The City of Portland offers an award-winning school district, new and upcoming expansion and development, and tons of amenities such as city maintained parks, new community/rec center, new (2024) large shopping center with Target anchor, and more on the way! This parcel sits just across from Nueces Bay, west of Highway 181, down from the town's newest elementary school. Minutes to Corpus Christi, Sinton, and Rockport!



Presented By
Alyssa Lienau
Century 21 Lucky Money 7138840322

Listing Broker
DH Realty Partners Inc

GENERAL DESCRIPTION

- Subdivision:** Portland-Murphy & Anderson Sub
- Property Type:** Residential Lots
- Lotsize:** 4,088,980
- MLS# / Area:** CCARTX-397125