



Under Contract - Pending on Market

**\$215,990**

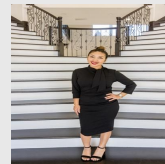
Call 7138840322 Today!

## GENERAL DESCRIPTION

**Subdivision:** Summerside  
**Property Type:** Residential Single Family  
**Bedrooms:** 3  
**Baths:** 2 Full  
**Stories:** 1  
**Garage:** 2 / Attached  
**Year Built:** 2026  
**Building Sqft:** 1,474 / Builder  
**Lotsize:** 5,706  
**Maintenance Fee:** \$36 / Monthly  
**MLS# / Area:** ABORTX-5873400

## 2324 SILVERCLOUD DR, LOCKHART, TX 78644 3 BEDS, 2 FULL BATH(S)

The Newlin - This single-level home showcases a spacious open floorplan shared between the kitchen, dining area and family room for easy entertaining. An owner's suite enjoys a private location in a rear corner of the home, complemented by an en-suite bathroom and walk-in closet. There are two secondary bedrooms at the front of the home, which are comfortable spaces for household members and overnight guests. Photos are for illustrative purposes only. Estimated Completion April 2026. The completion date, prices and features may vary and are subject to change. Please verify with Lennar directly.



Presented By  
**Alyssa Lienau**

Century 21 Lucky Money

7138840322

Listing Broker  
Marti Realty Group

2324 Silvercloud Dr, Lockhart, TX 78644

Visit <https://www.har.com/ABORTX-5873400> for more information