



For Sale on Market

\$200,000

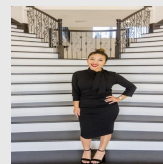
Call 7138840322 Today!

GENERAL DESCRIPTION

Subdivision: J R Ranchettes Ph Ii
Property Type: Land - Single Lot
Lotsize: 284,011
MLS# / Area: ABORTX-4636682

1012 E FM 93 RD, TEMPLE, TX 76502

Bring all offers!!! Discover the perfect blend of tranquility and convenience with this exceptional property with 6.5 acres of picturesque hill country land. Situated near Temple, Texas, this property offers a unique opportunity to escape the hustle and bustle of city life while still being close to all amenities. Embrace the natural beauty of this sprawling 6.5-acre property providing a peaceful retreat where you can enjoy nature at its finest. The delightful pond adds to the allure of this property, creating a serene ambiance and providing opportunities for picnicking by the water, or simply enjoying the soothing sounds of nature. Despite its secluded feel, the property is conveniently located close to amenities, including shopping centers, restaurants, schools, and healthcare facilities. The city of Temple is just a short drive away, ensuring you have easy access to everything you need. Enjoy the great outdoors with plenty of space for exploring, or even creating your own private garden. This property offers endless opportunities for outdoor enthusiasts and nature lovers. A mobile home was recently removed. Don't miss the chance to own this remarkable piece of hill country paradise. Whether you are seeking a peaceful escape, a recreational retreat, or an investment opportunity, 1012 E FM 93 in Temple, TX, offers it all. Contact us today to schedule a showing and experience the beauty and serenity of this exceptional property firsthand!



Presented By
Alyssa Lienau

Century 21 Lucky Money

7138840322

Listing Broker
Classic Realty

1012 E Fm 93 Rd, Temple, TX 76502

Visit <https://www.har.com/ABORTX-4636682> for more information