

For Lease on Market

**\$2,495**

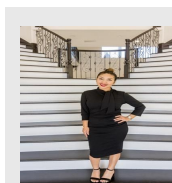
Call 7138840322 Today!

## 10001 PINNACLE CREST LOOP, AUSTIN, TX 78747 4 BEDS, 2 FULL BATH(S)

June 1st Move In Available! Welcome to the most pristine rental unit on the market!! SOLAR PANELS keep your energy costs extra low in this immaculate home. CLEAN CLEAN CLEAN. Your future rental home offers 4 Full Bedrooms/2 full baths, open kitchen, extra large living space and separate laundry room to complete a spacious floorplan. The primary suite is complete with a separate tub/shower, large soaking tub, double sinks and walk-in closet. Enjoy the neighborhood amenities which include a Jr. Olympic swimming pool, two parks, basketball court, soccer field, dog park, trails and more!! The private corner lot creates an oversized yard perfect for gardening and relaxation. LOCATION LOCATION LOCATION: Come and live only 15 minutes from Downtown Austin, 20 minutes from the Airport and 25 minutes from Tesla. Major shopping is just 2 miles down the road at Southpark Meadows and a HUGE HEB!! This home has EVERYTHING you're looking for!!

### GENERAL DESCRIPTION

- Subdivision:** Bradshaw Crossing Sub Sec 9
- Property Type:** Single Family Homes (Lease)
- Bedrooms:** 4
- Baths:** 2 Full
- Stories:** 1
- Garage:** 2 / Attached
- Year Built:** 2013
- Building Sqft:** 1,700 / Owner
- Lotsize:** 6,882
- MLS# / Area:** ABORTX-1751772



Presented By  
**Alyssa Lienau**

Century 21 Lucky Money

7138840322

Listing Broker  
Dash Realty

10001 Pinnacle Crest Loop, Austin, TX 78747

Visit <https://www.har.com/ABORTX-1751772> for more information