



For Sale on Market

\$125,000

Call 8325030533 Today!

68 COUNTY ROAD 5119, CLEVELAND, TX 77327

Spacious half-acre lot (21,344 sq ft) located in a growing Cleveland community with a low tax rate. Ideal for building your custom home or placing a manufactured home. Conveniently located near Grand Parkway (99) and US-59, providing easy access to major routes. property includes a storage building and utilities available, including water, sewer, and electricity (buyer to verify). Community restrictions and HOA apply.

GENERAL DESCRIPTION

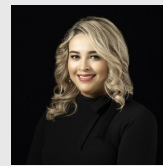
Subdivision: Santa Fe, Sec 1

Property Type: Lots

Maintenance Fee: \$120 / Annually

Market Area: Cleveland Area

MLS# / Area: 97673190 / 52



Get in touch
Violeta Pineda

8325030533



Keller Williams Realty Southwest
2812650000

68 County Road 5119, Cleveland, TX 77327

Visit <https://www.har.com/97673190> for more information