



For Sale on Market

\$175,000

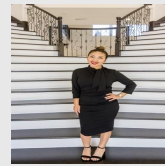
Call 7138840322 Today!

TBD 22ND, HEMPSTEAD, TX 77445

±0.7 acres consisting of Lots 1–5, offering a cleared, generally level tract within an established Hempstead neighborhood. The property is bordered by mature trees along the perimeter, providing natural separation while maintaining an open, usable interior. Located near Wilkins Street and in proximity to 21st and 22nd Streets, the site is surrounded by existing residential development. Paved road access is available nearby, and the tract's configuration allows flexibility for future planning and layout. The surrounding area includes established homes and utilities in the vicinity. Convenient access to TX-6 and US-290 supports connectivity throughout Waller County and beyond. Buyer to verify zoning, utilities, access, and intended use.

GENERAL DESCRIPTION

Subdivision: Hempstead
Property Type: Lots
Lotsize: 62,500 / Appraisal District
Market Area: Hempstead
MLS# / Area: 91127559 / 26



Presented By
Alyssa Lienau

Century 21 Lucky Money

7138840322

Listing Broker
Wendy Cline Properties Group

TBD 22nd, Hempstead, TX 77445

Visit <https://www.har.com/91127559> for more information