

Under Contract - Pending on Market

**\$255,990**

Call 7138840322 Today!

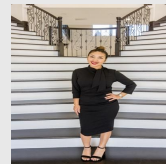
## 9206 BURCH EAGLE CT, BAYTOWN, TX 77521

3 BEDS, 2 FULL BATH(S)

NEW Lennar Cottage Collection "Kitson" Plan with Elevation "H3" in Beautiful Pelly Place at Baytown Crossing! This single-level home showcases a spacious open floorplan shared between the kitchen, dining area and family room for easy entertaining during gatherings. An owner's suite enjoys a private location in a rear corner of the home, complemented by an en-suite bathroom and walk-in closet. There are two secondary bedrooms along the side of the home, which are comfortable spaces for household members and overnight guests. \*\*HOA includes Internet service and front lawn maintenance!\*\*

### GENERAL DESCRIPTION

- Subdivision:** Pelly Place
- Property Type:** Single-Family
- Bedrooms:** 3
  - Baths:** 2 Full
  - Stories:** 1
  - Garage:** 2 / Attached
  - Style:** Ranch
- Year Built:** 2026
- Building Sqft:** 1,451 / Builder
- Maintenance Fee:** \$2,000 / Annually
- Market Area:** Baytown/Chambers County
- MLS# / Area:** 81415537 / 53



Presented By  
**Alyssa Lienau**

Century 21 Lucky Money

7138840322

Listing Broker  
Lennar Homes Village Builders, LLC

9206 Burch Eagle Ct, Baytown, TX 77521

Visit <https://www.har.com/81415537> for more information