

For Lease on Market

\$2,595

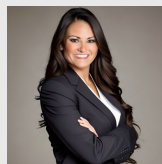
Call 2819726464 Today!

1315 TERRACE VIEW DRIVE, SUGAR LAND, TX 77479 3 BEDS, 2 FULL BATH(S)

Set in the heart of Greatwood Stonebridge, this thoughtfully updated home blends comfort, functionality, and everyday livability. The inviting living room features a cozy GAS FIREPLACE and flows seamlessly into the kitchen and breakfast area, complete with NEW QUARTZ COUNTERTOPS, FARMHOUSE SINK, and ample cabinetry. The private primary suite offers peaceful backyard views, DUAL SINKS, a soaking tub, separate shower, and WALK-IN CLOSET. Notable upgrades include a WHOLE-HOUSE GENERATOR, NEW WATER HEATER, and FULL SPRINKLER SYSTEM for easy maintenance. Enjoy outdoor living with a SCREENED-IN PATIO, open patio, and charming front porch surrounded by mature trees. Zoned to top-rated schools with convenient access to major commuter routes.

GENERAL DESCRIPTION

- Subdivision:** GREATWOOD STONEBRIDGE
- Property Type:** Single Family Homes (Lease)
- Bedrooms:** 3-3
- Baths:** 2 Full
- Stories:** 1
- Garage:** 2 / Attached
- Style:** Traditional
- Year Built:** 2000
- Building Sqft:** 1,802 / Appraisal District
- Master Planned Community:** Greatwood
- Lotsize:** 10,163 / Appraisal District
- Market Area:** Sugar Land West
- Key Map:** 607U
- MLS# / Area:** 69548783 / 30



Get in touch
Audra O'Neal

2819726464

ONTX Realty Partners

2812812650

1315 TERRACE VIEW DRIVE, Sugar Land, TX 77479

Visit <https://www.har.com/69548783> for more information