



For Sale on Market

**\$132,500**

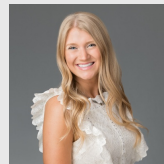
Call 8323342554 Today!

## 106 EAGLE RUN RD, WILLIS, TX 77378

Welcome to your future home site at 106 Eagle Run Road, New Waverly, TX! This expansive 43,560 square foot lot is a blank canvas ready for your dream home. With no timeframe to build and a minimum square footage requirement of 2,000, you have the freedom and flexibility to plan your perfect space at your own pace. Enjoy the tranquility and privacy this high elevation property brings, free from the hustle and bustle of city life. Plus, with underground utilities and fiber optic services, you're all set for modern living. One of the many perks of this location is its low taxes and NO Municipal Utility District (MUD) fees, offering you significant savings. Whether you're looking to build now or hold onto this prime piece of land until you're ready, this is an opportunity you don't want to miss. Make it yours today!

### GENERAL DESCRIPTION

- Subdivision:** Deer Forest
- Property Type:** Lots
- Lotsize:** 43,560 / Appraisal District
- Maintenance Fee:** \$495 / Annually
- Market Area:** New Waverly Area
- MLS# / Area:** 47067911 / 43



Get in touch  
**Jessica Fleming**

8323342554

COMPASS

Compass RE Texas, LLC - Lake Conroe

9364481400

106 Eagle Run Rd, Willis, TX 77378

Visit <https://www.har.com/47067911> for more information