

Under Contract - Pending on Market

\$360,000

Call 8326142886 Today!

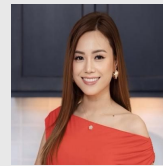
4330 E MEADOWS DR, SUGAR LAND, TX 77479

4 BEDS, 2 FULL & 1 HALF BATH(S)

Beautiful Ashton Woods Ashland Plan featuring 2 stories and 2,621 sqft, impeccably maintained and move-in ready. The inviting entry features soaring ceilings, a grand staircase with white balusters, and elegant lighting. Rich wood flooring flows into the formal living and dining areas. All bedrooms are upstairs along with a spacious game room. Upstairs, the primary suite includes a generously sized bathroom with dual vanities, a soaking tub, abundant counter space, and natural light from a distinctive arched window. The home offers three living areas with generously sized rooms and a large country kitchen. The spacious backyard is ideal for relaxing or entertaining, featuring a covered patio, lush green lawn, mature trees, and a privacy fence—perfect for outdoor enjoyment. West-facing with no power lines and located in a highly rated school district. Updates include brand-new granite countertops, brand new refrigerator, and fresh interior paint.

GENERAL DESCRIPTION

- Subdivision:** High Meadows Sec 1
- Property Type:** Single-Family
- Bedrooms:** 4
 - Baths:** 2 Full & 1 Half
 - Stories:** 2
 - Garage:** 2 / Attached
 - Style:** Traditional
- Year Built:** 1992
- Building Sqft:** 2,621 / Appraisal District
- Lotsize:** 6,727 / Appraisal District
- Maintenance Fee:** \$1,300 / Annually
- Market Area:** Sugar Land West
- Key Map:** 567W
- MLS# / Area:** 40425121 / 29



Get in touch
Trina Le

8326142886



The Vincere Group LLC

7138762550

4330 E Meadows Dr, Sugar Land, TX 77479

Visit <https://www.har.com/40425121> for more information