



For Sale on Market

\$229,900

Call 8322350395 Today!

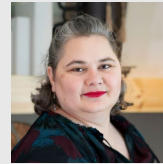
16841 GLENHEATH, MONTGOMERY, TX 77316

3 BEDS, 2 FULL BATH(S)

5 LOTS INCLUDED – Multi-Lot Property Near Lake Conroe with Room to Expand, Build, or Invest Opportunities to own multiple lots in one property don't come along often. This property includes five total lots, offering added space and flexibility just minutes from Lake Conroe. Whether you're planning to build, expand, or invest, having multiple lots opens the door to a variety of possibilities that single-lot homes can't match. Five lots included in one property Workshop already in place Space for future improvements or additional use Located near Lake Conroe with convenient access to the surrounding area, this property offers a unique combination of land and potential. If you've been looking for space and flexibility in one package, this is a property worth exploring.

GENERAL DESCRIPTION

- Subdivision:** Lake Conroe Village
- Property Type:** Single-Family
- Bedrooms:** 3
- Baths:** 2 Full
- Stories:** 1
- Style:** Traditional
- Year Built:** 1997
- Building Sqft:** 1,344 / Appraisal District
- Lotsize:** 9,000 / Appraisal District
- Maintenance Fee:** \$384 / Annually
- Market Area:** Lake Conroe Area
- Key Map:** 154H
- MLS# / Area:** 26098701 / 39



Get in touch
Randie Henson

8322350395



LPT Realty, LLC

8773662213

16841 Glenheath, Montgomery, TX 77316

Visit <https://www.har.com/26098701> for more information