



For Sale on Market

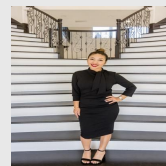
**\$356,990**

Call 7138840322 Today!

## 2012 SUGARBERRY GULLY LN, CONROE, TX 77301

4 BEDS, 3 FULL & 1 HALF BATH(S)

NEW CONSTRUCTION – Long Lake Plan 264– Lake Ridge Series, Discover this stunning new construction home offering 4 spacious bedrooms, 3.5 elegant bathrooms, and a generous 2872 sq ft of beautifully designed living space. The two–story layout includes an open–concept kitchen with granite countertops, a walk–in pantry, and stainless steel appliances, perfect for entertaining. Relax in the expansive living area or retreat to the private owner’s suite with a spa–inspired bathroom. Enjoy added convenience with a 2–car garage, upstairs loft, and a covered back patio for outdoor living. Nestled in a vibrant, beautiful community with a park, fishing pond and walking trails, and top–rated schools—this is where comfort meets connection.



Presented By  
**Alyssa Lienau**

Century 21 Lucky Money

7138840322

### GENERAL DESCRIPTION

- Subdivision:** Barton Creek Ranch  
**Property Type:** Single-Family  
**Bedrooms:** 4  
**Baths:** 3 Full & 1 Half  
**Stories:** 2  
**Garage:** 2 / Attached  
**Style:** Traditional  
**Year Built:** 2025  
**Building Sqft:** 2,872 / Builder  
**Lotsize:** 5,400 / Other  
**Maintenance Fee:** \$725 / Annually  
**Market Area:** Conroe Southeast  
**MLS# / Area:** 22865512 / 19

Listing Broker  
Long Lake Ltd

2012 Sugarberry Gully Ln, Conroe, TX 77301

Visit <https://www.har.com/22865512> for more information